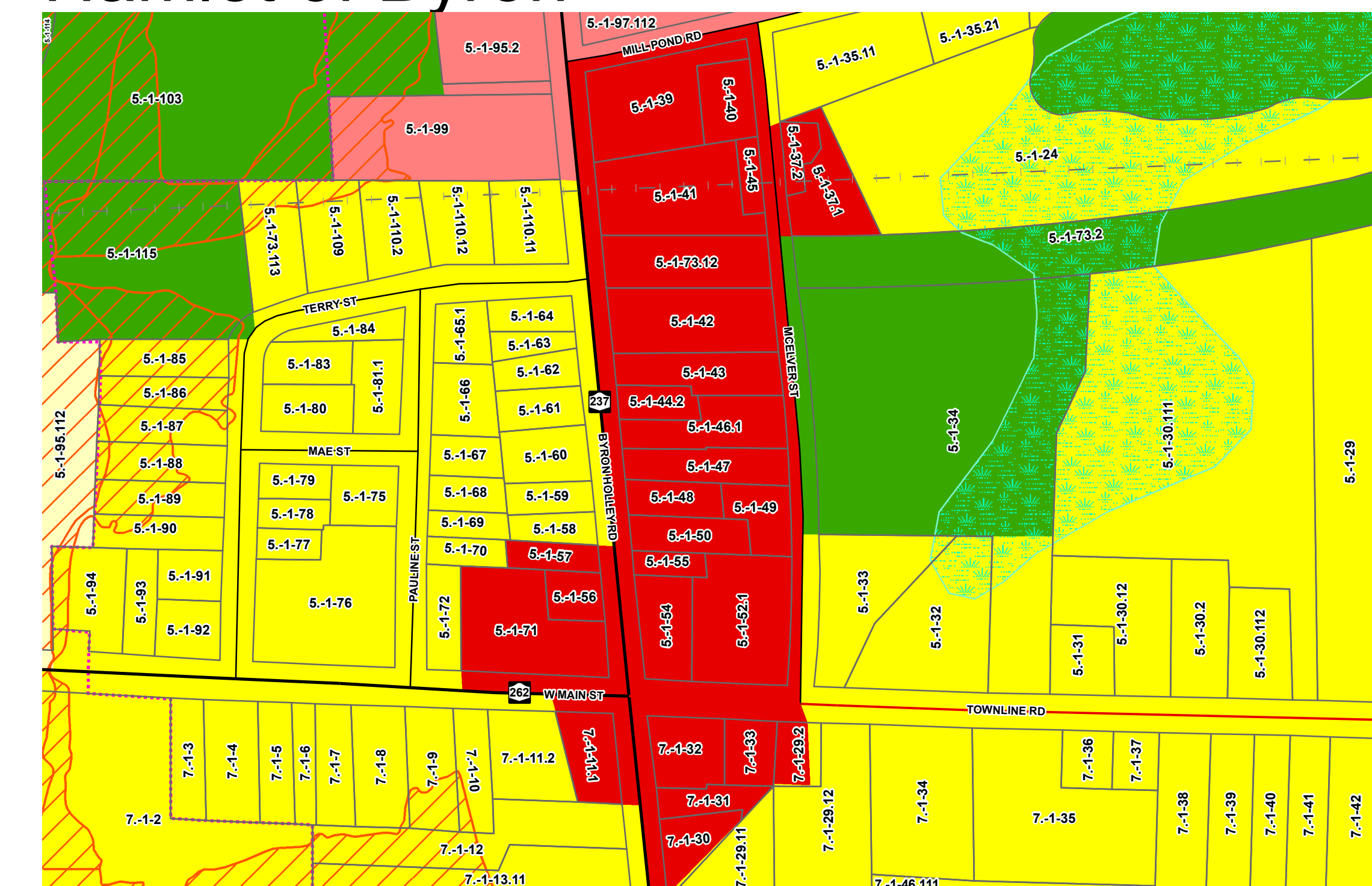


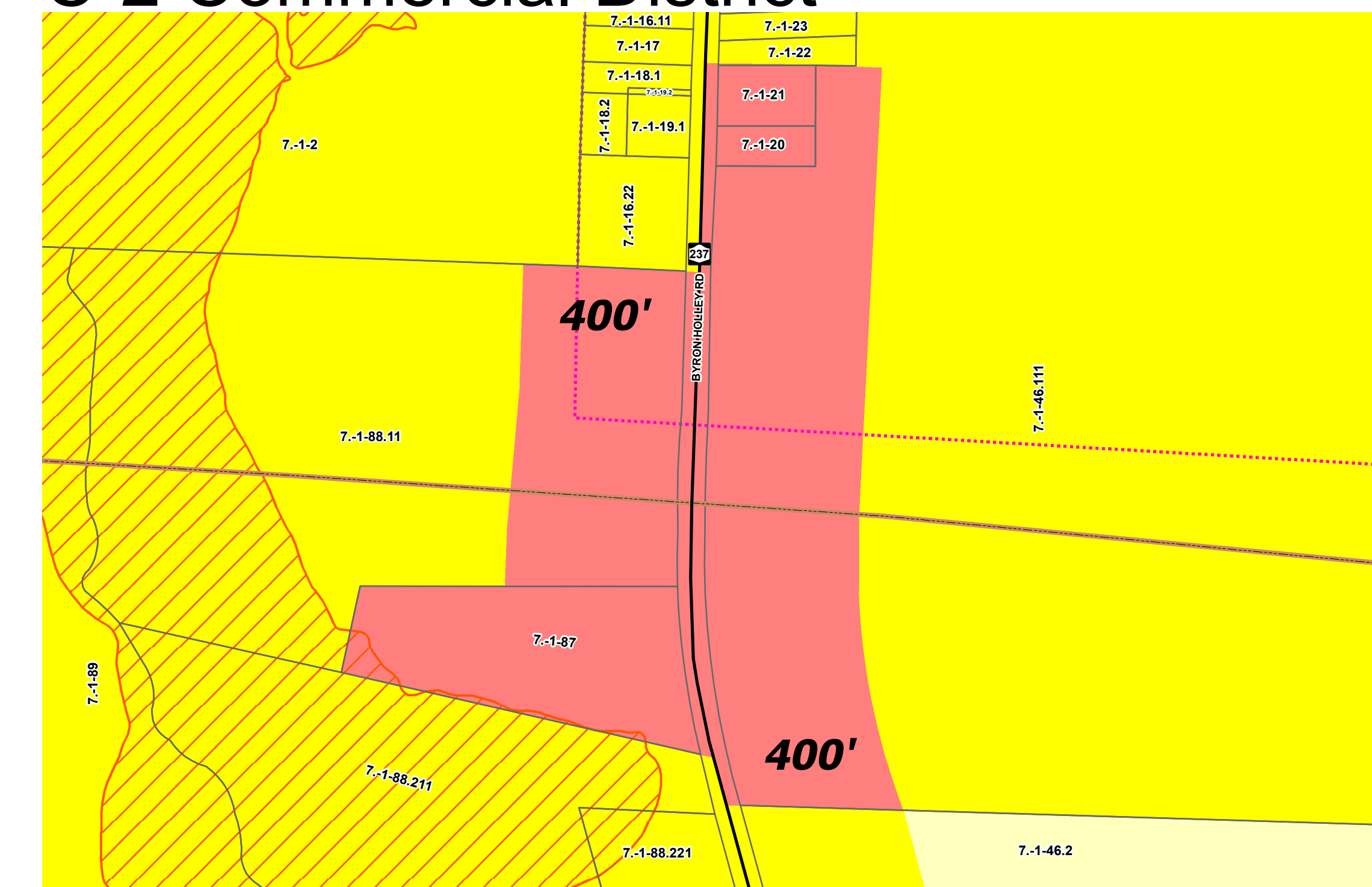
Town of Byron Official Zoning Map

In accordance with the
Town of Byron Zoning Law

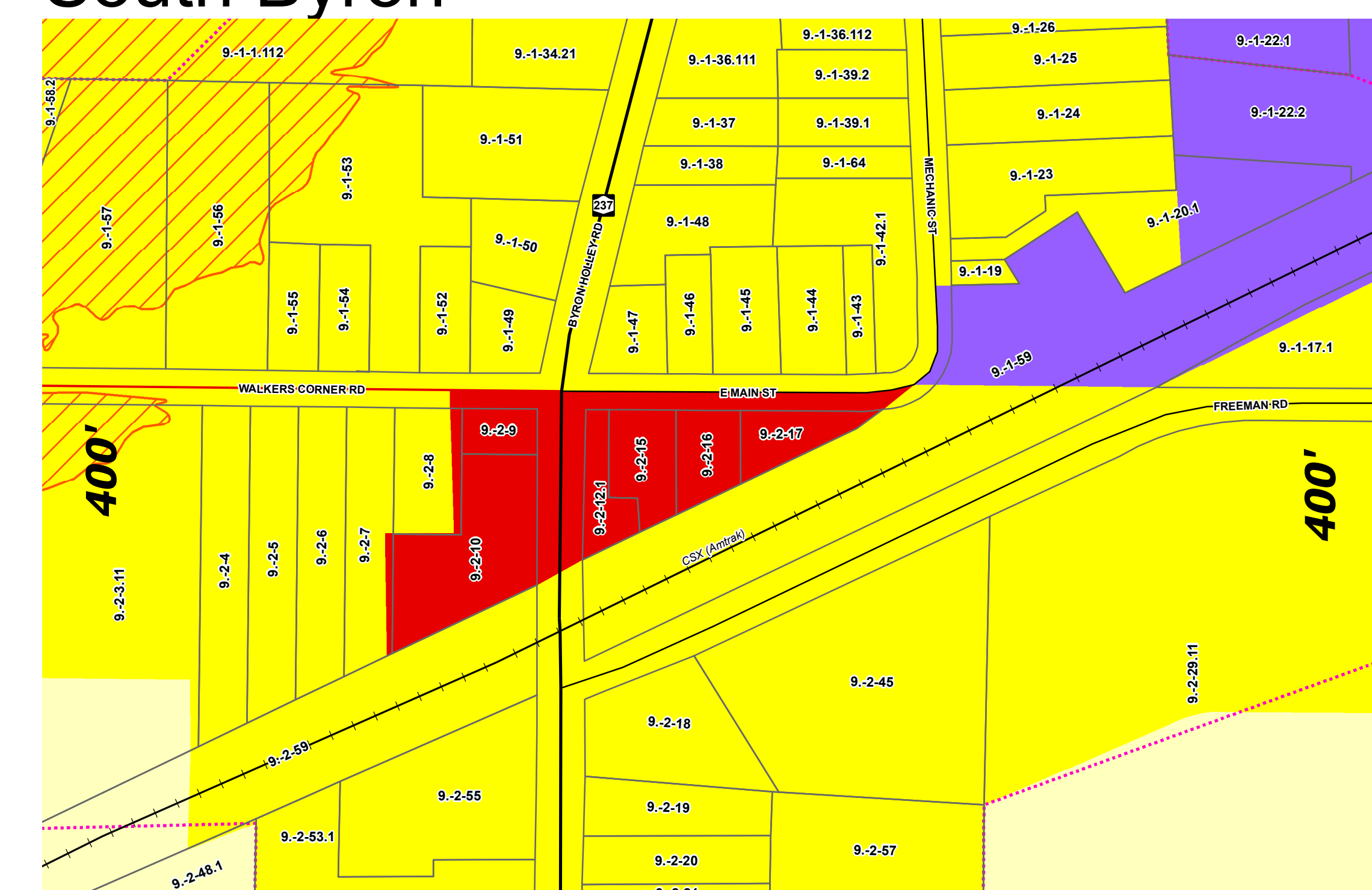
Hamlet of Byron



C-2 Commercial District

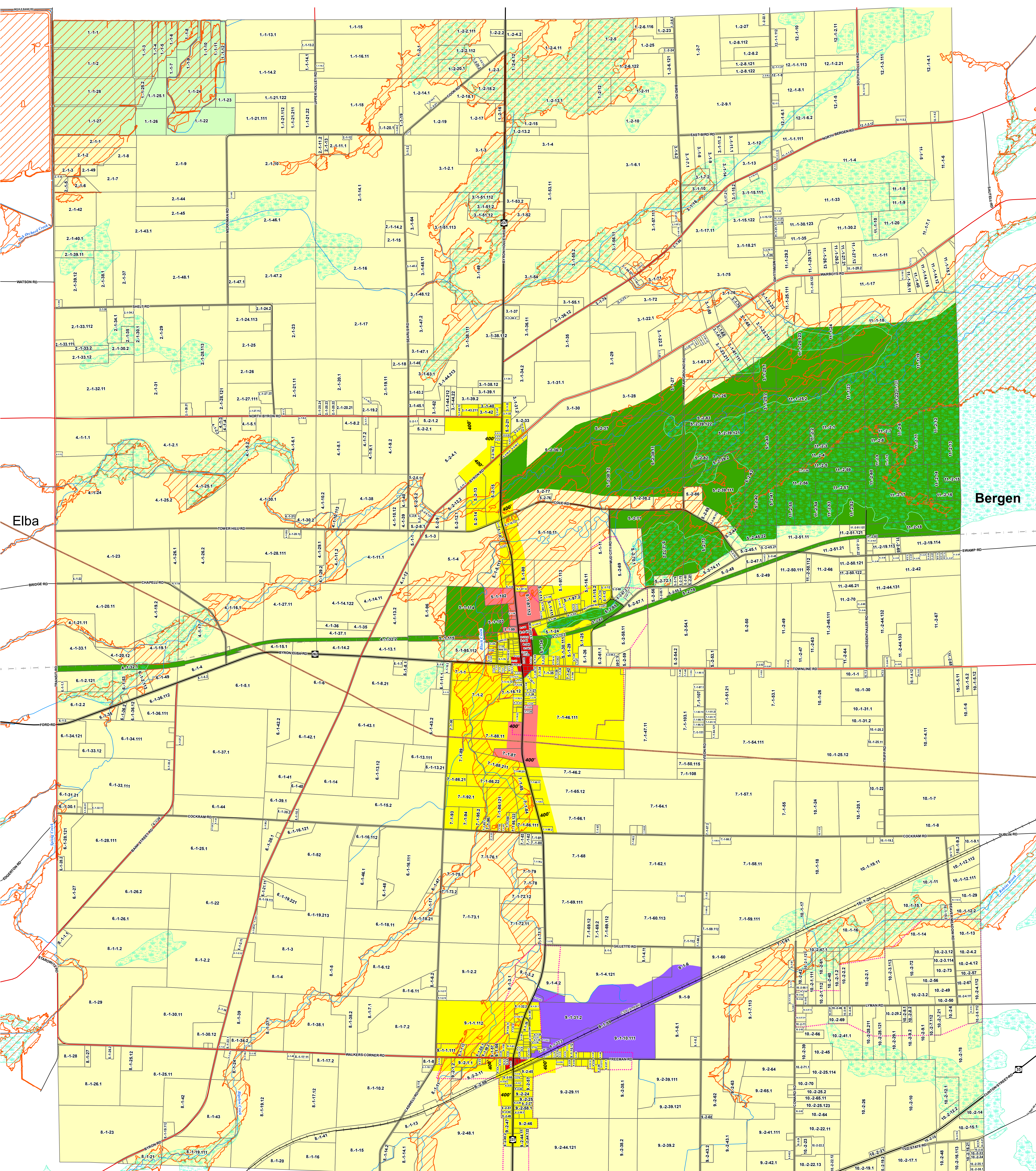


South Byron



Map Features

Roads	— Interstate Highway	— Active Railroad	Zoning Districts
— State Routes	— Abandoned Railroad	— 2024 Tax Parcels	A Agricultural
— County Highway	— SG Development Areas	— Streams	A-R Agricultural-Residential
— Town Road	— State Regulated Wetlands	— Flood Hazard Area	C-1 Neighborhood Commercial
— Village Street			C-2 General Commercial
— Electric Line			I-1 Industrial
			L-C Land Conservation
			R-1 Residential



Revisions
06/12/1980 9/13/2006
06/08/1983 04/09/2024
05/28/2003

Map Created by the
Genesee County Department of Planning
November 2024

